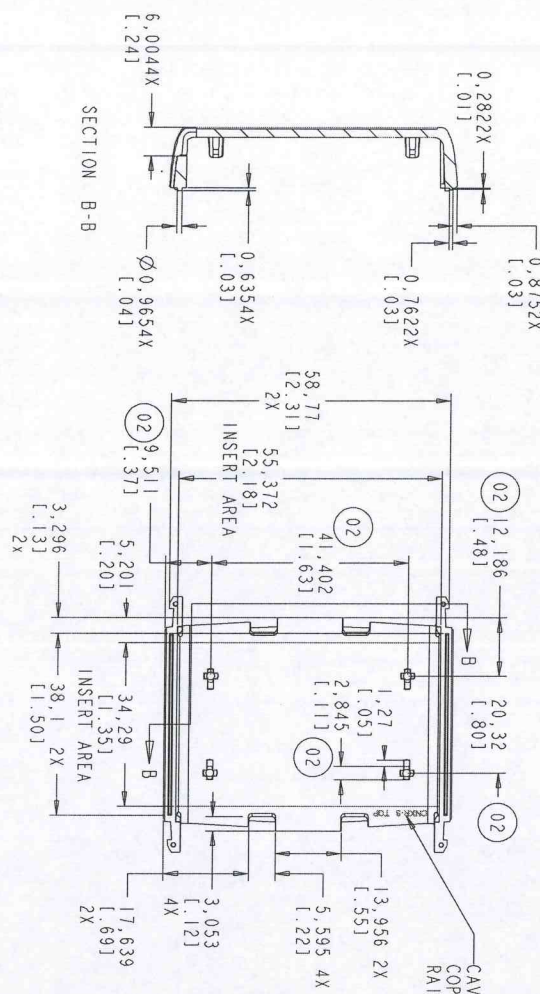
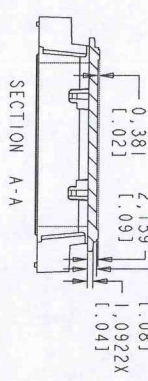
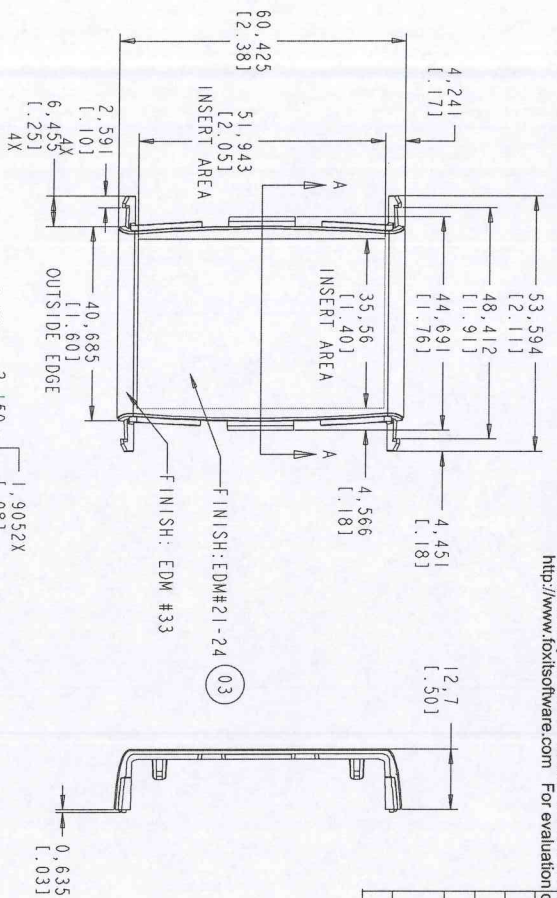


REVISIONS		DATE	INT
01	INITIAL RELEASE	04-08-12	Janves
02	ADDED PCB POSTS	05/10/12	JMM
03	CHANGED RECESS TEXTURE TO EDM, ADDED CAVITY ID	05-21-12	JMM



NOTES:

- FOR LIST OF MATERIAL SEE: PL 115128-501
- UNLESS OTHERWISE SPECIFIED: CORNERS SHOWN SHARP HAVE A RADIUS OF .01.
- NO KNOCKOUTS, GATES OR FLASH ON THE EXTERIOR SURFACES.
- FLASH PERMISSIBLE WITHIN .005 INCH.
- KNOCKOUTS FLUSH TO .005 BELOW SURFACE.
- TEXTURE: EDM #33
- LABEL RECESS: EDM#21-24
- INTERIOR FINISH: SPI C3 OR BETTER

**PACNITEC**  
 Subsidiary of LaFrance Corp.  
 One LaFrance way, Concordville, Pa. 19332-5002 U.S.A.

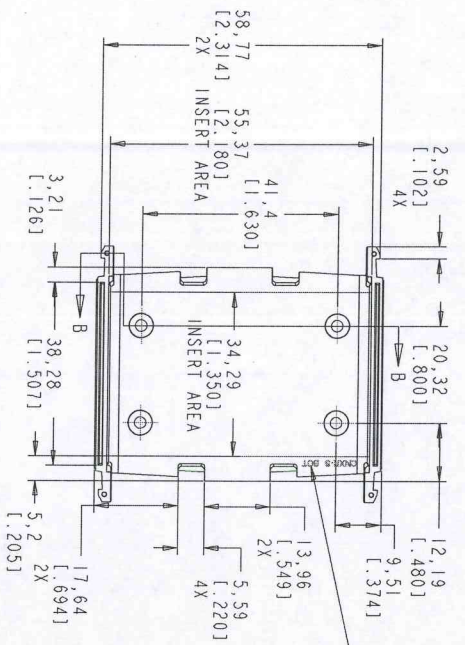
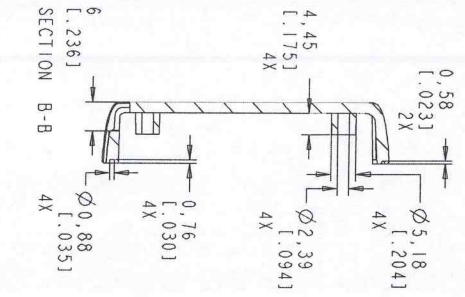
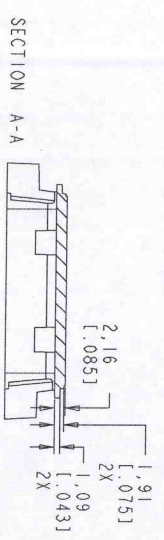
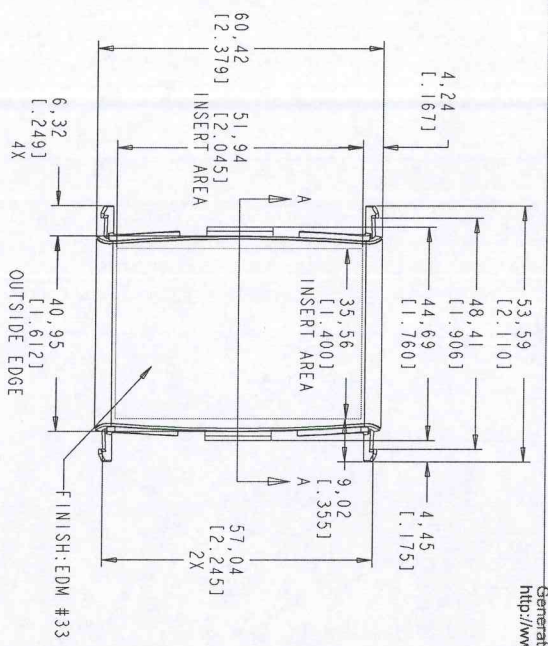
NAME	DATE	PROCESS: INJ MOLDED	SCALE:	SHEET 1 OF 1
DRAWN: Janves	04-08-12			
CHECK: T&d	04-08-12			
APPROVE:		PART #	DRAWING NUMBER	REV
		115120-01	115120-01	03

MATERIAL: ABS  
 COLOR: SEE PARTS LIST

MOLDED TOLERANCE:  
 PRODUCT WILL BE PRODUCED PER SPI SEI INSTITUTE PRODUCT STANDARDS AND TOLERANCES

MACHINED:  
 ANGLES: ±1/2°  
 DECIMALS: ±.02  
 THICKNESS: ±.01

REVISIONS				
LET	ECN	DESCRIPTION	DATE	INT
01		INITIAL RELEASE	04-08-12	Janves
02		ADDED CAVITY ID	05-22-12	JMM



CAVITY ID:  
 COPY 1.25 TALL  
 RAISED 0.05 TO 0.1

- NOTES:
- FOR LIST OF MATERIAL SEE: PL 115128-501
  - UNLESS OTHERWISE SPECIFIED: CORNERS SHOWN SHARP HAVE A RADIUS OF .01.
  - NO KNOCKOUTS, GATES OR FLASH ON THE EXTERIOR SURFACES.
  - FLASH PERMISSIBLE WITHIN .005 INCH.
  - KNOCKOUTS FLUSH TO .005 BELOW SURFACE.
  - TEXTURE: EDM #33
  - INTERIOR FINISH: SPI C3 OR BETTER

**PACNITEG** One LaFrance way, Concordville, Pa. 19332-5002 U.S.A.  
 Subsidiary of LaFrance Corp.

MOLDED TOLERANCE: PRODUCT TOL. ±.010 PER SPI-891 PRODUCT STANDARDS AND TOLERANCES MACHINED: ANGLES: ±1/2° DECIMALS: .XX ±.02 .XXX ±.014	NAME: <b>Janves</b> DATE: <b>04-08-12</b> CHECK: <b>Ted</b> APPROVE:	DRAWN: <b>Janves</b> DATE: <b>04-08-12</b> CHECK: <b>Ted</b> APPROVE:	PROCESS:	SCALE:	SHEET 1 OF 1	PART # 115120-02	DRAWING NUMBER 115120-02	REV 02
--	---	--	----------	--------	--------------	---------------------	-----------------------------	-----------